



European Labour Market Monitoring Network

Annual meeting, Copenhagen 8th-9th October 2009
Kirsten Thomsen, Head of division, Employment Region Copenhagen and Zealand



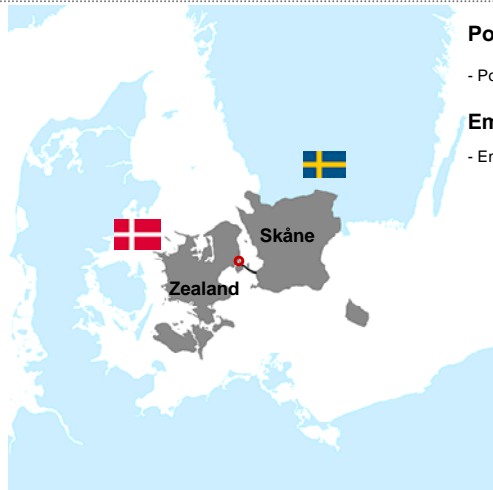
Main Tasks of the Employment Region



**EMPLOYMENT REGION
COPENHAGEN & ZEALAND**

- **Support and ensure** the 44 job centres (PES) performance in the region
- **Monitoring and analysing** the development on the regional labour market.
- One of four regional employment authorities within the Danish National Labour Market Authority under the Ministry of Employment.

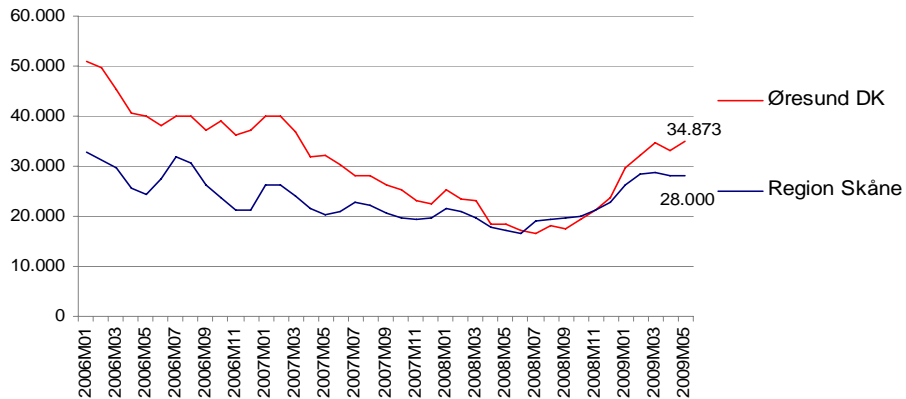
One region – two countries!



Population in Oresund region	3.7 mio.
- Population in Oresund DK	2.5 mio.
Employed in Oresund region	1.8 mio
- Employed in Oresund DK	1.25 mio

Low unemployment – but rising!

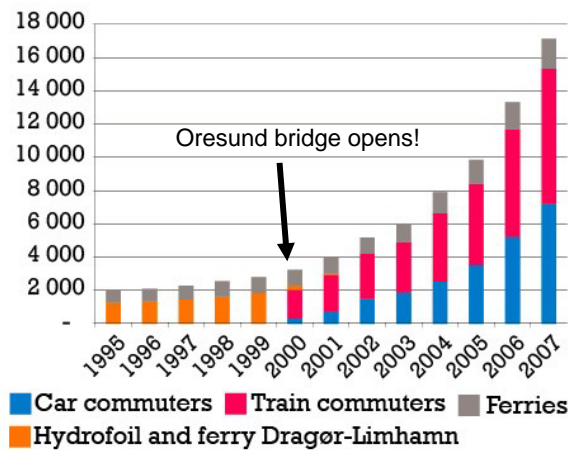
Number of unemployed, 2006-2009



Source: Ørestat

Increased integration – from a low level!

Number of commuters across Oresund in november



Project: "Jobs and Competences ..."

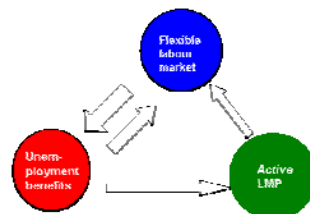
- **Purpose:** To identify the needs and gaps of competence in the Oresund Region
- **Perspective:** Facilitate integration of a common labour market and common provision of skills and competences in the Øresund Region

Project: 3 main activities and products

- A common labour market balance system – that measures current shortages of specific occupations (4 digit Isco)
- Common forecasting results for labour market development
- In depth studies of 6 sectors e.g. care-sector, transport and cleantech

Enjoy your stay!

I 
CPH



Copenhagen – bikes, mermaids and flexicurity!